

love for learning * learning for life *

Outwoods Primary School Newsletter



15th April 2016

Dear Parents/Carers

Welcome to the latest newsletter that sees us going into the last term of the school year. We are pleased to report that the children are working very hard, as are all of the staff to ensure every day at Outwoods is an opportunity to develop and learn.

We will shortly be carrying out some important assessments including the Year 2 SATS, and the Year 6 SAT tests, which are due to start the week beginning 9th May 2016. As always, everyone at the school will do their utmost to support the children during this period. Year One children will also be doing the National Phonics Screening Check during the month of June. If you have any questions about any of the assessments, do not hesitate in contacting us. We also have some useful revision books available for year six and year two which can give you helpful pointers when it comes to helping your child at home. If you would like to purchase any, pop to the office to have a look or just send the money in an envelope. There are a set of three for each Key Stage, one for maths, one for grammar, punctuation and spelling and one for reading they are only £4:50 each (£13:50 for the set). They are already proving very popular. Parents of children in year five may also find them useful.

As always, should you have any questions or concerns about your child, or the school do not hesitate in contacting me,

Mrs. Dandy.

KEEP OUR SCHOOL TIDY

In order to keep our school grounds neat and tidy, we would be grateful if all parents and carers can encourage their children to use the litter bins provided around the school. Recently, there has been an increase in the amount of litter being dropped around the school and inside the school gates. We want our school area to be the tidiest in the town, and everyone can help achieve this.



HEAD LICE

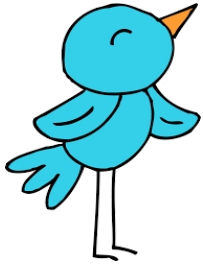
The school is no longer able to check for head lice. As such, we urge parents to check their children regularly at least once a week. This is a perpetual problem and very hard to eradicate, but we can get rid of the pests. If you find live head lice on your children, they will need to be treated; your pharmacist can give you advice about the best treatments. For more help and advice you can visit the website: www.onceaweektakeapeek.com



FOREST SCHOOLS

The children all had a wonderful time on Monday April 11th when we had our whole school 'Forest School's Day'. Most of the children spent almost the entire day outside enjoying a wide range of activities. You must take time to admire the benches year six made out of wooden pallets, with the help of volunteers from 3Ms. The wonderful sculptures children have made with natural materials are dotted around the grounds and we even have new bird tables and wind chimes in the trees! Some children even began to make an igloo out of milk containers (we are still collecting them if you have any - 4 pint variety washed out please!). We look forward to many more such activities throughout the coming months. Well done everybody, you were brilliant!





SUPERSTARS WHITSUN HOLIDAY CLUB
TEACHERS TRAINING DAY -FRIDAY 27TH MAY
& TUESDAY 31st MAY -FRIDAY 3rd JUNE



We will be having a Spring-tastic time with lots of planting, Spring art and craft activities, Spring walks, growing egg and cress and sheep biscuit making!

Friday 3rd June, Spring film club.

The club is based in the lower school hall here at Outwoods and is hosted by 'Little Stars'. children who have attended the holiday clubs so far have had a great time!

Breakfast Club - 8am - 9am - £2:50

School hours - 9am - 3pm - £15

After School club 3pm -6pm - £2:50 per hour

Full day 8am - 6pm - £22

All sessions will include snacks and a high tea is provided at 4:30pm. For a full day, lunchbox will need to be provided.

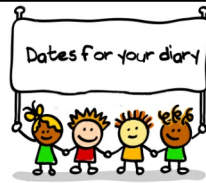
Please call Sian for more details on 07922541454

-spaces are limited so book early!



IMPORTANT DATES

- Monday 2nd May - School closed for MayDay
- Wednesday 4th May - DI SCO
- Thursday 5th May - Nursery closed for polling
- Friday 6th May - Show 'N' Tell assembly
- Monday 9th May - Year Six SATS week
- Thursday 26th May -Children break up for Whitsun
- Friday 27th May -SCHOOL CLOSED (training)
- Monday 30th - Friday 3rd May - half term holiday
- Monday 6th June - Children back at school
- Friday 10th June -Show 'N' Tell assembly
- Monday 13th June - Year 1 phonics check (during this week)
- Thursday 23rd June - SPORTS DAY
- Thursday 23rd June - Nursery closed EU Referendum
- Thursday 7th July - I NDUCTI ON DAY and open evening
- Friday 8th July - Show 'N' Tell assembly
- Friday 22nd July - School closes for Summer Holiday
- Monday September 5th - school reopens for new term



MESSY CHURCH

Come and see what it is all about, children of all ages welcome, bring your families with you and have fun together!

GAMES-CRAFTS-CELEBRATION-MEAL

SUNDAY MAY 1ST

3:45 - 5:45

St Mary's Church Atherstone

DISCO

WEDNESDAY MAY 4th

UPPER SCHOOL HALL

"May the Fourth be with you!"

Film themed Fancy Dress (optional)

Prizes for the best

I nfants 4:30 -6:00pm

Juniors 6:30 - 8:00 pm

£2:50 I ncludes tuck

Pay at the door

All children must be collected promptly by a responsible adult

